

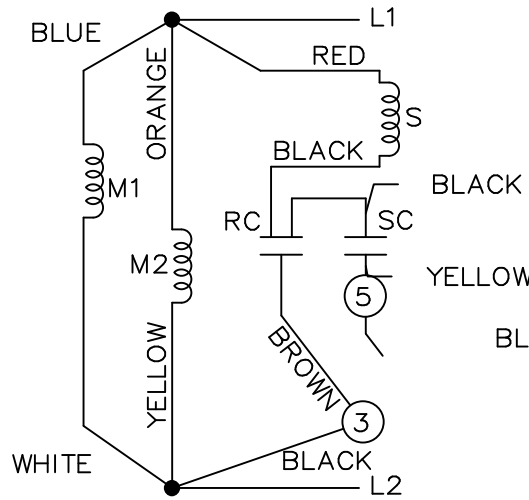
DASH	FR.	C	BS	DASH	FR.	C	BS
				806	140T/56HZ	13.37	5.82
				856	"	13.87	6.32
				906	"	14.37	6.82
756	140T/56HZ	12.87	5.32	956	"	14.87	7.32

				TOLERANCES UNLESS SPECIFIED		DRAWN RM 08-12-1991	
				DEC.	INCHES	CHK ML 08-12-1991	
07	ADDED DRAIN HOLE NOTE PER ECN#24221	PN 4/26/2012	SVL	.X	±.1	APPD GK 08-12-1991	
06	ADDED HEIGHT DIMENSION (7.34)	RJW 09-12-2005	ML	.XX	±.03	SCALE 1=2.75	
05	ADDED CONN DECAL CN13879	KJC 03-26-2003	ML	.XXX	±.005	REF	
04	REDRAWN ON CADD	RM 08-12-1991		.XXXX	±.0005	FMF	
NO.	REVISION	BY & DATE	CHK	ANG	±7'30"	PREV	
THIS DRAWING IN DESIGN AND DETAIL IS OUR PROPERTY AND MUST NOT BE USED EXCEPT IN CONNECTION WITH OUR WORK ALL RIGHTS OF DESIGN AND INVENTION ARE RESERVED THIS IS AN ELECTRONICALLY GENERATED DOCUMENT - DO NOT SCALE THIS PRINT				RFP	CAD FILE 100116	SIZE A	DRAWING NO. 100116
				DIST WP		PAGE OF	REV. 07

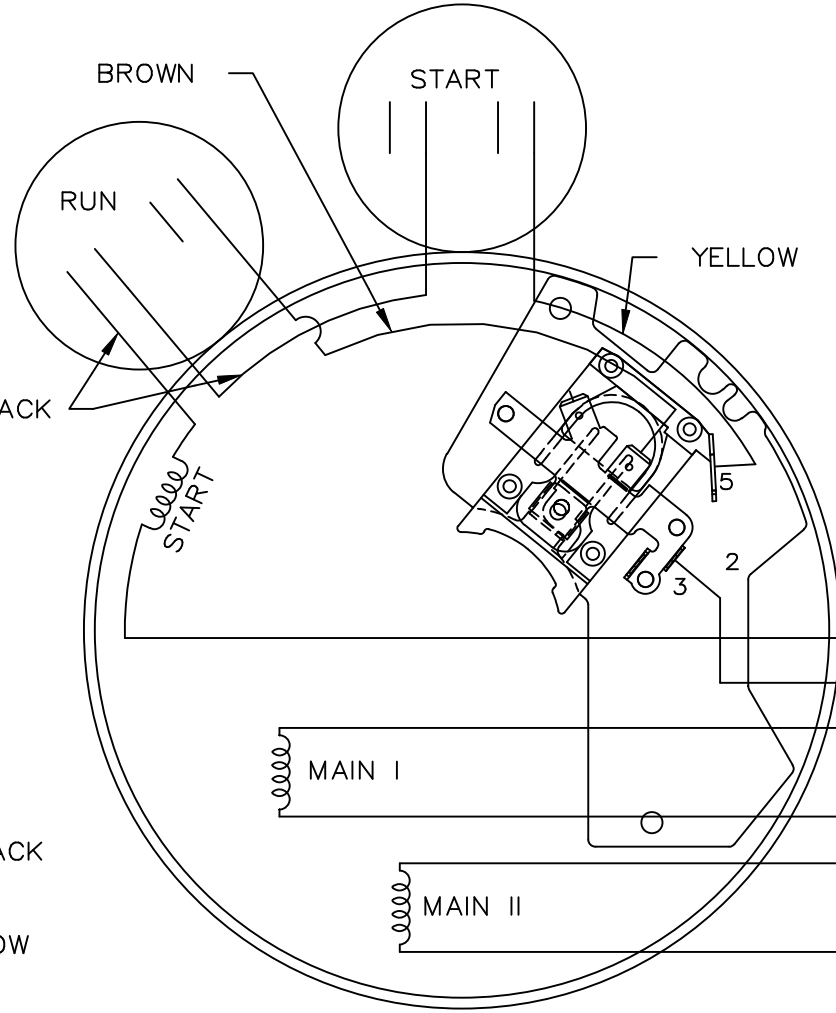
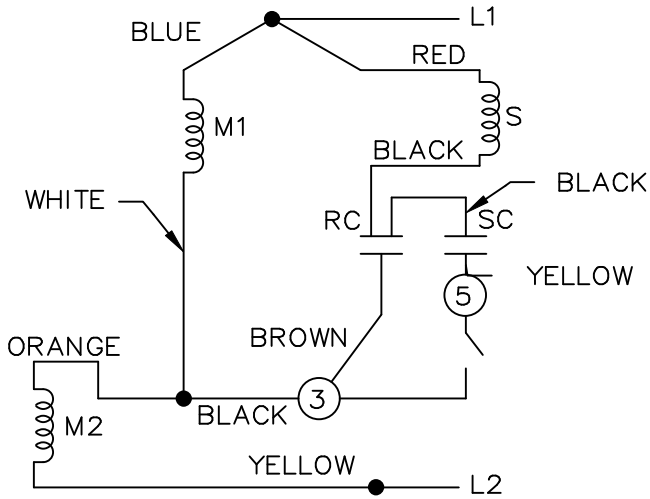


TITLE OUTLINE
140 FR. 56 HZ - TEFC 1ø - BB

LOW VOLTAGE C.C.W.

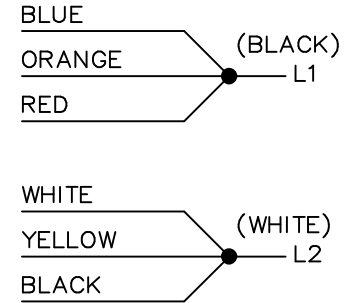


HIGH VOLTAGE C.C.W.

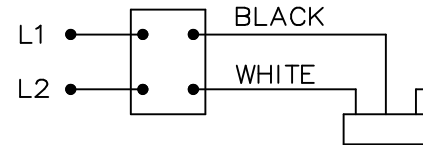
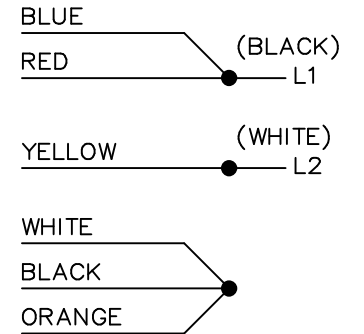


DUAL VOLTAGE CAPACITOR
START-CAP RUN NO OVERLOAD
SELECT ROTATION

LOW VOLTAGE C.C.W. ROTATION



HIGH VOLTAGE C.C.W. ROTATION



FOR C.W. ROTATION,
EITHER VOLTAGE,
INTERCHANGE RED WITH
BLACK LEAD

			TOLERANCES UNLESS SPECIFIED		MARATHON ELECTRIC	DRAWN DT 06-07-1996			
			DEC.	INCHES		CHK MRB 06-16-1996			
			.X	±.1	TITLE CONNECTION DIAGRAM	APPD GK 06-16-1996	SCALE 5=8		
9	ADDED CORD AND SWITCH VIEW MU37521	DRS 06-22-2001	.XXX	±.005		REF			
8	REDRAWN ON CADD	DT 06-16-1996	.XXXX	±.0005		MAT'L.	FMF		
NO.	REVISION	BY & DATE	CHK	ANG ±7'30"		FINISH	PREV		
THIS DRAWING IN DESIGN AND DETAIL IS OUR PROPERTY AND MUST NOT BE USED EXCEPT IN CONNECTION WITH OUR WORK ALL RIGHTS OF DESIGN AND INVENTION ARE RESERVED THIS IS AN ELECTRONICALLY GENERATED DOCUMENT - DO NOT SCALE THIS PRINT			RFP		CAD FILE 102006-51	SIZE A	DRAWING NO. 102006-51	PAGE OF 9	REV. 9
			DIST	WP					